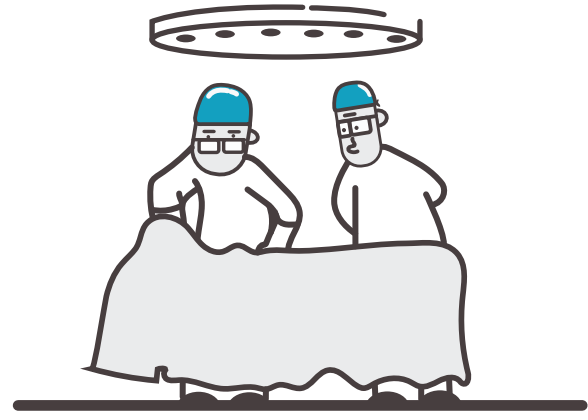


Disease related malnutrition is a major public concern in South Africa

Studies have shown that disease related malnutrition is very common across all healthcare settings.^{1,2}



>40%

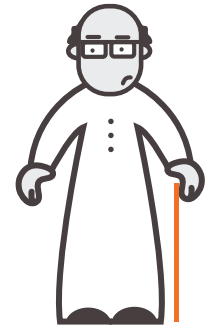
Enteral Nutrition Association

of surgical patients were or were likely to become nutritionally depleted³

80%

of patients >65 years admitted to hospital were malnourished or at risk⁴

ADMISSIONS

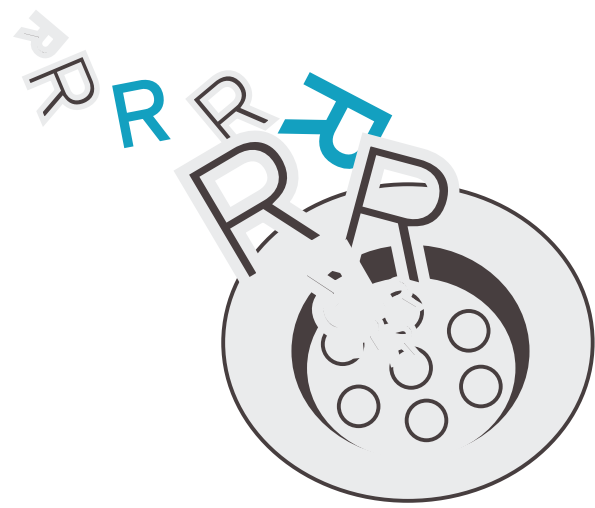
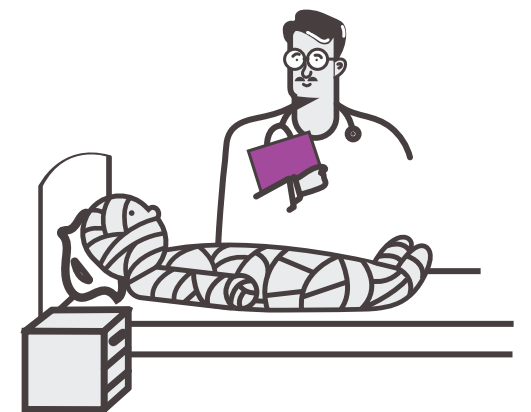


6 - 14%

of hospitalised children were malnourished⁵

Almost 1 in 2

burn patients were malnourished on admission²



Disease related malnutrition results in:

More complications⁶
Longer hospital stays⁶
Readmissions⁶
Higher health costs⁶

Partner with ENASA, SASPEN and HDIG in our fight against disease related malnutrition in South Africa.

For more information, contact us on www.enasa.org



ENASA = Enteral Nutrition Association of South Africa; SASPEN = South African Society for Parenteral and Enteral Nutrition; HDIG = Hospital Dietitians Interest Group

References: 1. Elia M, Normand C, Norman K, Laviano A. A systematic review of the cost and cost effectiveness of using standard oral nutritional supplements in the hospital setting. Clin Nutr 2016;35:370-380. 2. Elia M, Normand C, Norman K, Laviano A. A systematic review of the cost and cost effectiveness of using standard oral nutritional supplements in community and care home settings. Clin Nutr 2016;35:125-137.